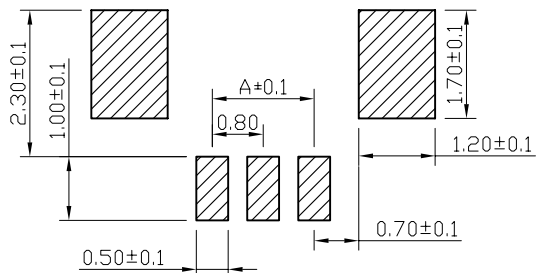
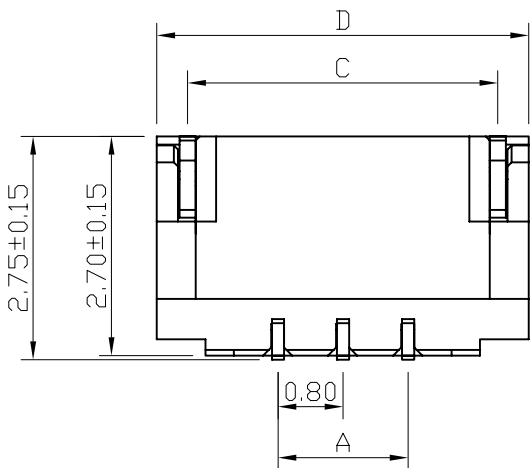
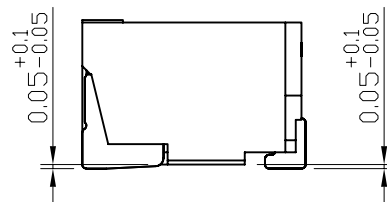
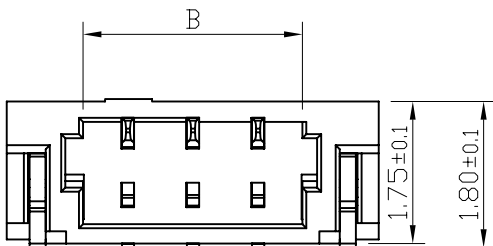


■ Specifications:

- Voltage rating: 30V AC/DC
- Current rating: 0.5A AC/DC
- Withstanding voltage: 200V AC/minute
- Temperature range: -25° C ~ +85° C
- Insulation resistance: $\geq 100M\Omega$
- Contact resistance: $\leq 20m\Omega$
- After environmental testing: $\leq 30m\Omega$
- Plastic material: LCP UL 94V-0
- Terminal material: Phosphor bronze
- Finish: Gold-Plated



PCB LAYOUT

Poles	Dimensions				Poles	Dimensions			
	A	B	C	D		A	B	C	D
02	0.80	1.90	3.04	3.78	10	7.20	8.30	9.44	10.18
03	1.60	2.70	3.84	4.58	11	8.00	9.10	10.24	10.98
04	2.40	3.50	4.64	5.38	12	8.80	9.90	11.04	11.78
05	3.20	4.30	5.44	6.18	13	9.60	10.70	11.84	12.58
06	4.00	5.10	6.24	6.98	14	10.40	11.50	12.64	13.38
07	4.80	5.90	7.04	7.78	15	11.20	12.30	13.44	14.18
08	5.60	6.70	7.84	8.58	16	12.00	13.10	14.24	14.98
09	6.40	7.50	8.64	9.38					

CUSTOMER DRAWING

一般公差
GENERAL TOLERANCE

.X ±0.25
.XX ±0.15
.XXX ±0.10
ANGLES ±3°



东莞市红都电子科技有限公司

DONG GUAN SHI HONG DU ELECTRONICS TECHNOLOGY CO., LTD

制图 (DR): Kevin 06/03/16 品名 (TITLE): 0.8mm WTB SMT/C Type

审核 (CHKD): 料号 (PART NO): WT80818A-Mxx-00RL

修订 (REV) 版本 (REV) 核准 (APPD): 比例 (SCALE) 1:1 单位 (UNITS) mm 张数 (SHEET) 1 OF 1 图幅 (SIZE) A4